



# North Aurora 101: A Living History

*Image: Hartsburg & Hawksley Mill, ca. 1900*

# About This Program

## HISTORY QUIZ!

Let's take a walk through North Aurora's timeline together. With a show of hands, pick the correct answer out of the three choices.

## DISPLAYS



Put a sticker on your street so we can see where everyone is from...

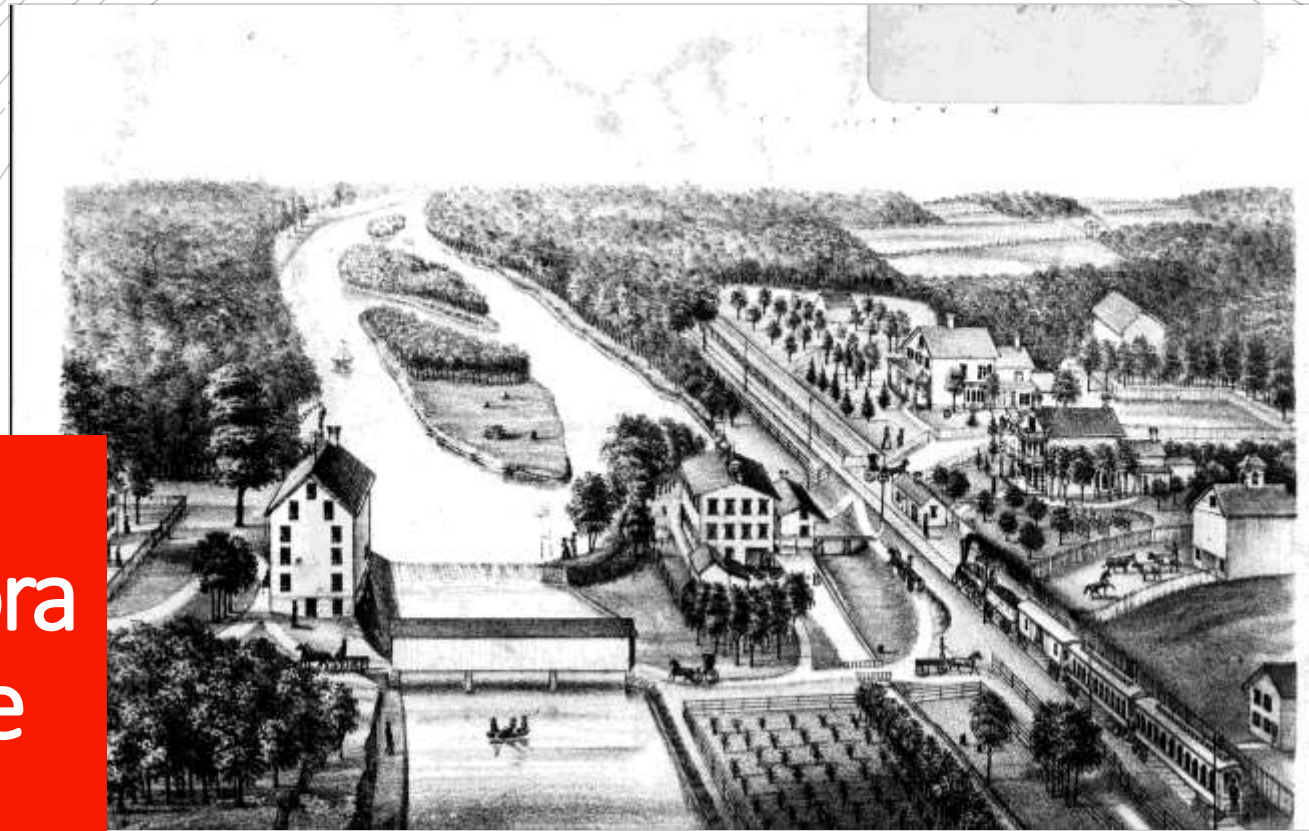


Help us identify the people in old photographs.



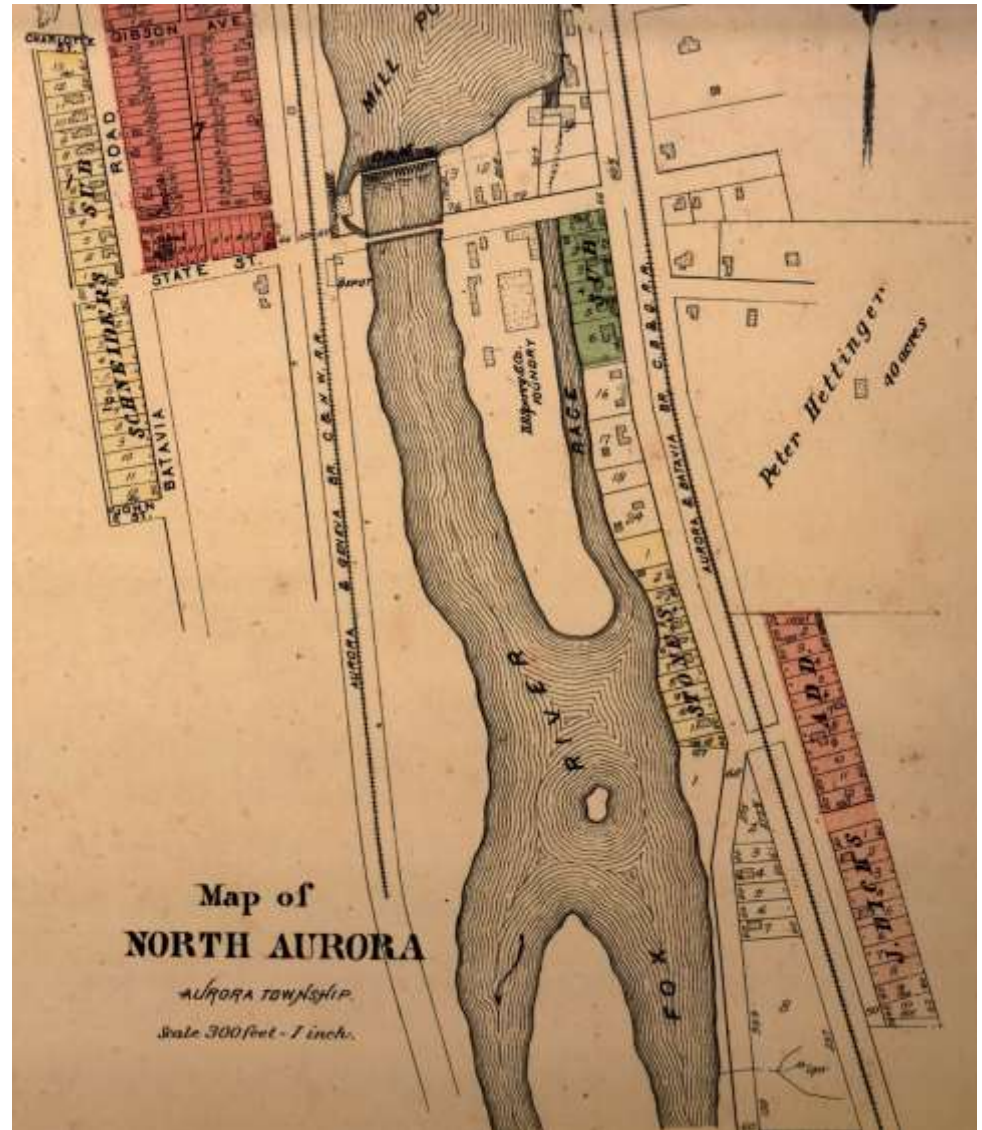
Browse copies of archival documents, including North Aurora news from the early 1970s and Expo Park pamphlets from the 1930s

North Aurora  
used to be  
called...



- A. South Batavia
- B. Schneider's Mill
- C. Skull Island

B. Schneider's  
Mill or  
Schneider's  
Crossing





## John Peter Schneider

**Born:** 1801/2, Frankfurt  
Rhine-Main, Germany

**Lived:** Philadelphia,  
Michigan, North Aurora

**Married:**  
1826, Philadelphia, PA

**Died:** 28 June 1883 (82),  
Aurora, Kane Co.



*Shabbona, Sha-bon-na), Shabonee, Shaubena, Shab-eh-nay*



*Wabaunsee, Wah-bahn-se, Waubonsee, Waabaanizii in the contemporary Ojibwe language, and Wabanzi in the contemporary Potawatomi language (meaning "He Causes Paleness" in both languages).*



## John Peter Schneider

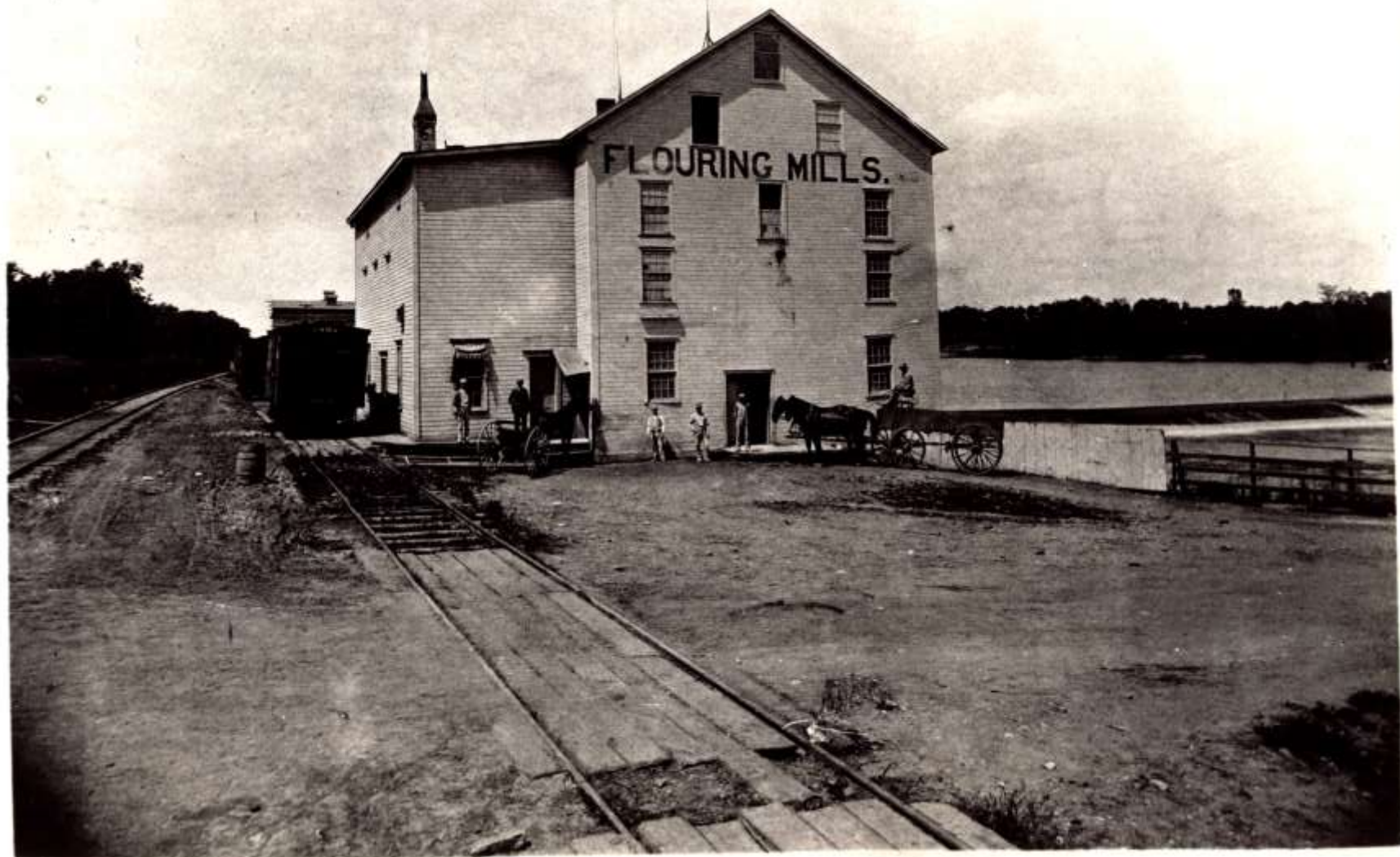
**Born:** 1801/2, Frankfurt  
Rhine-Main, Germany

**Lived:** Philadelphia,  
Michigan, North Aurora

**Married:**  
1826, Philadelphia, PA

**Died:** 28 June 1883 (82),  
Aurora, Kane Co.

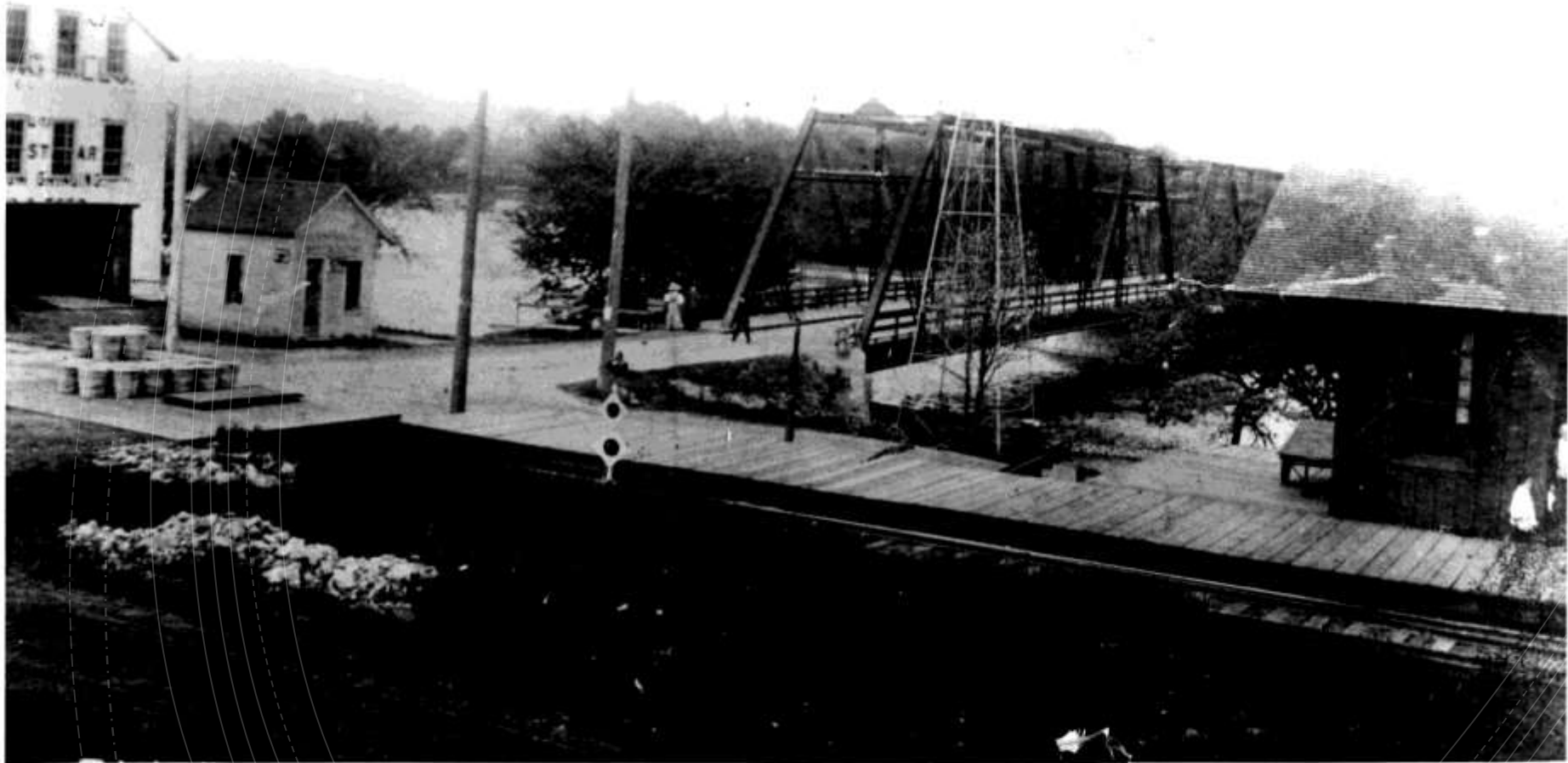
*This mill burned in 1918 or 1919  
This picture taken about 1895*

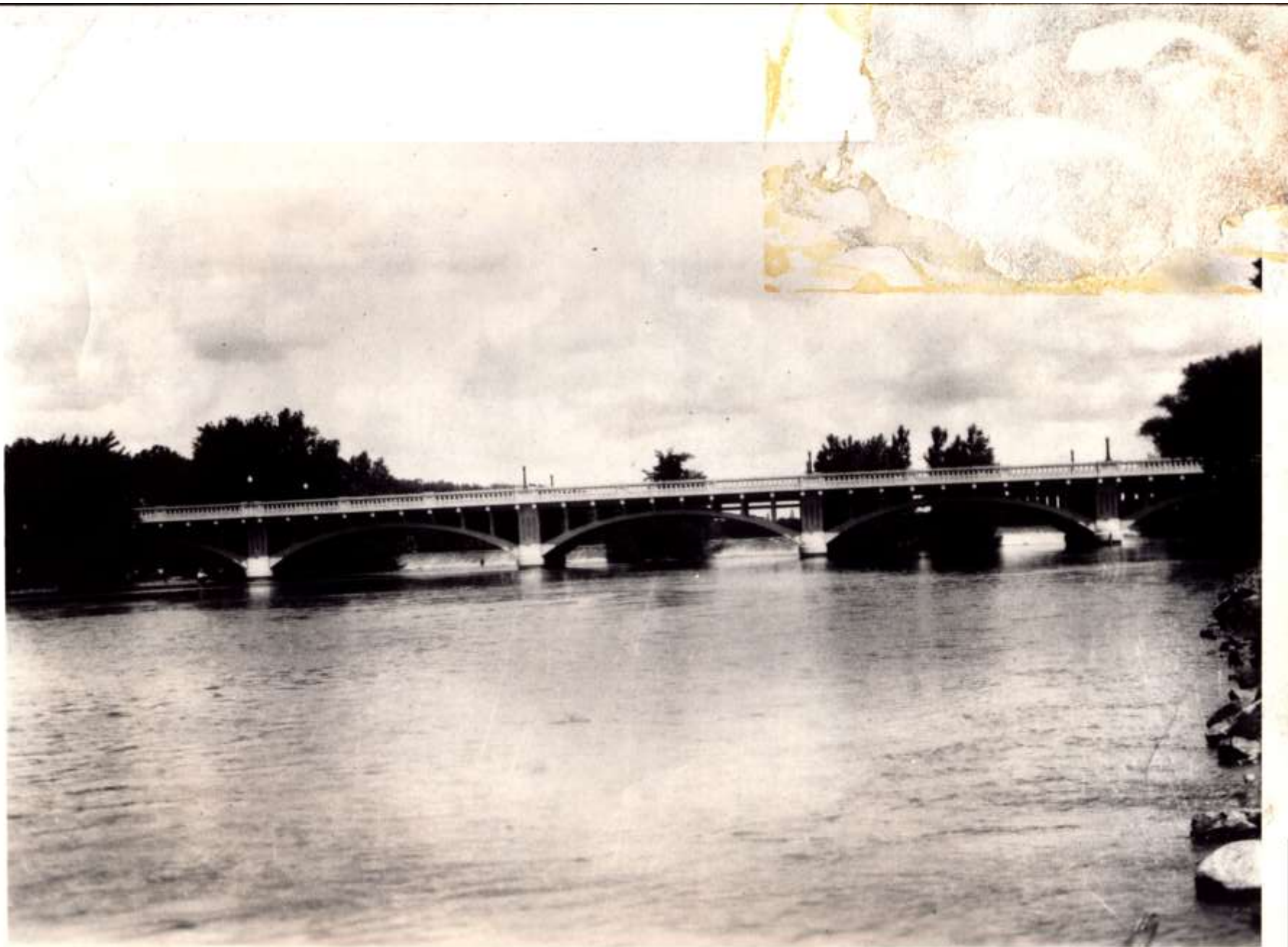






This is the old iron bridge  
west of the Fox River, it was  
erected in 1887 and was dismantled  
in 1931







# The Dam Debate

The  
Exposition  
Park in North  
Aurora  
claimed...



Upon arrival at the Park you will be guided by the large entrance directly off the Lincoln Highway. As you drive in upon the grounds Exposition Hotel is very easily seen and the drive leads you to the entrance.

*From then*

- A. ...to be the "Coney Island of the Middle West."
- B. ...it was second largest park of its kind in the state.
- C. ...it had the largest outdoor pool in the world.



Airman's view of Exposition Park and Central States Fair Grounds.

Page twenty

## MR. and MRS. CENTRAL WEST:

### *Are You Picnic and Vacation Minded?*

Do you know that there is nothing like Exposition Amusement Park in Chicago, New York or elsewhere?

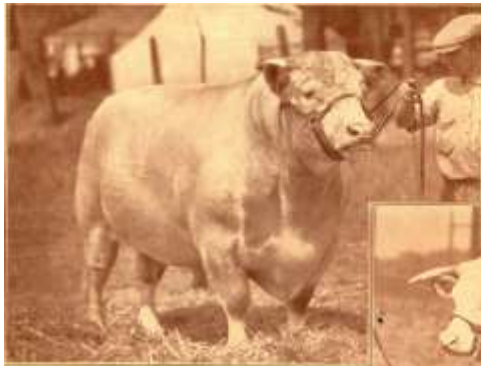
- Just an hour's drive from the Chicago Loop. A gigantic million dollar recreation center that has no duplicate in all the world.
- Located in the heart of the beautiful Fox River Valley on the Lincoln Highway with excellent travel facilities over super paved highways, fast electric trains or the Burlington Railroad.



## How to Get to Exposition Amusement Park



Answer: All of the above!



Above—MIKADO  
Shorthorn Bull  
Winmoor Farm, Deerfield, Ill.



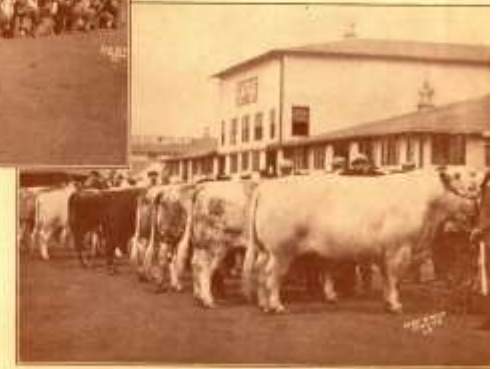
Prize Winners at Central States Fair 1925.

Below—DONALD DARE, Jr.  
Hereford  
J. H. Bereman, Aurora, Ill.



Below—A class of Herefords at  
the 1925 Central States Fair  
and Exposition.

Below—Shorthorn Bulls being  
judged at the 1925 Fair.



Page Above

What started state fairs?



*This was North Aurora Cannery.  
(Photo taken 1931)*

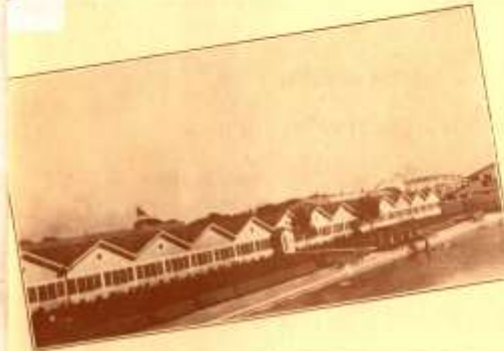


## WORLD'S LARGEST ARTIFICIAL SWIMMING POOL

● An outdoor concrete pool ranging from one foot to ten feet deep. Three hundred sixty feet long, one hundred sixty feet wide—the largest in the world! Water is completely changed every twenty-four hours and geyser fountains constantly supply pure, fresh water. Diving boards, towers, rafts, pneumatic water toys. More than 5,000 people can swim at one time. Reasonable admission prices always prevail, including suit, locker, towel, and shower with a forty per cent reduction allowed to persons who use their own suits. Swimming instruction at reasonable hourly rates.

### Swimming Matches

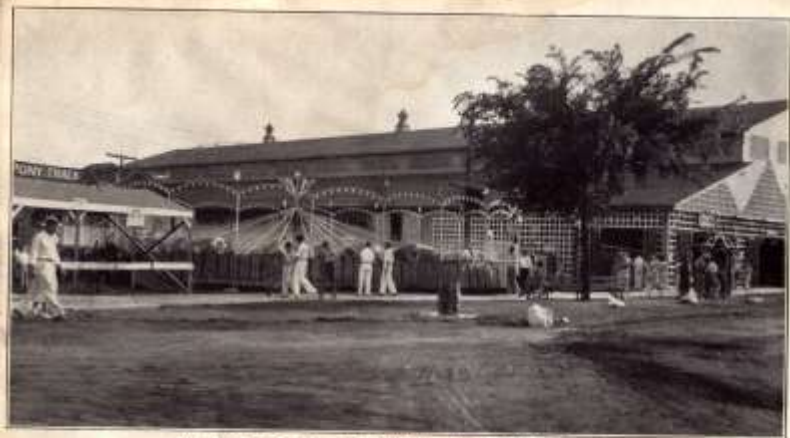
● Special swimming matches are held in the big concrete pool. Spectators' benches at the water's edge.



Views of America's largest swimming pool surrounded by Exposition Hotel.



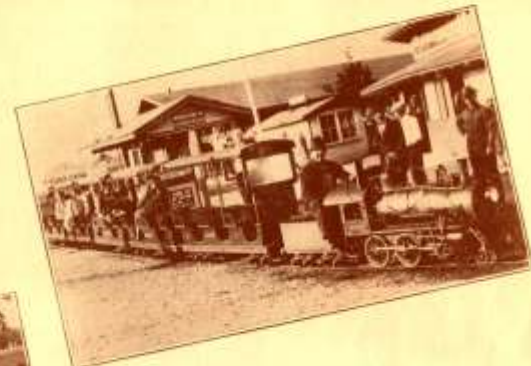
Your pleasures here are complete.



The Leaping Lena—A Rollicking Joyful Ride For All



The Tilt-a-Whirl—A Modern Riding Device That Pleases



Children find unlimited amusement in riding on the Exposition Limited, Kiddy Cars and the group of ponies that stand ready to carry the little ones around the track.

Page eleven

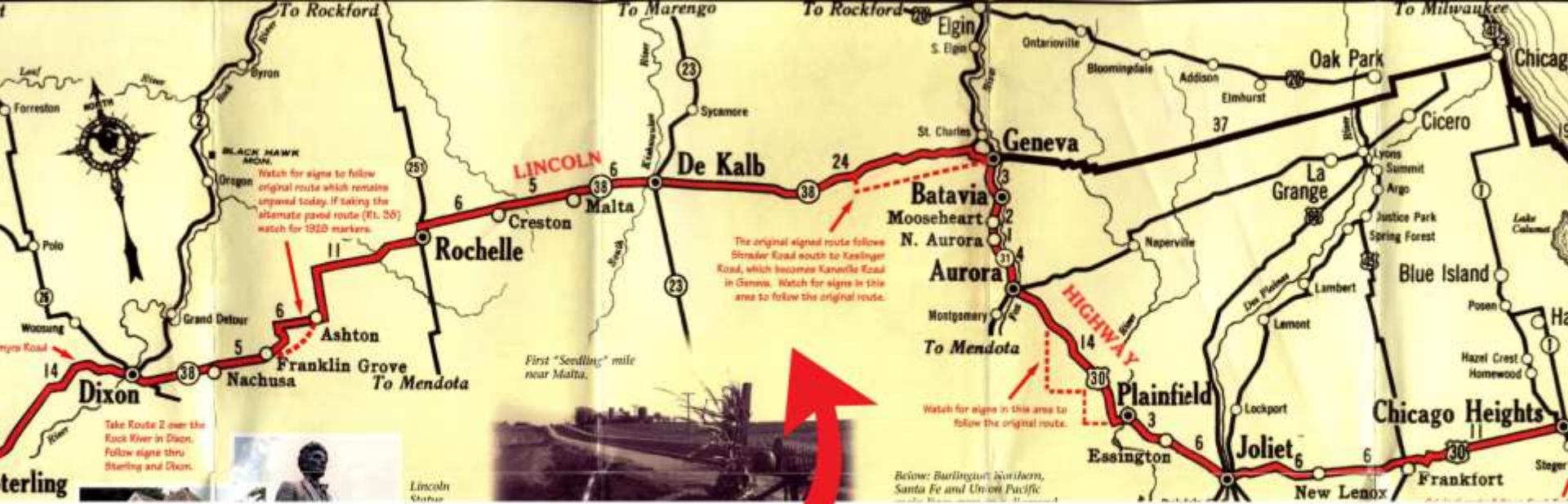


1950 NA Map



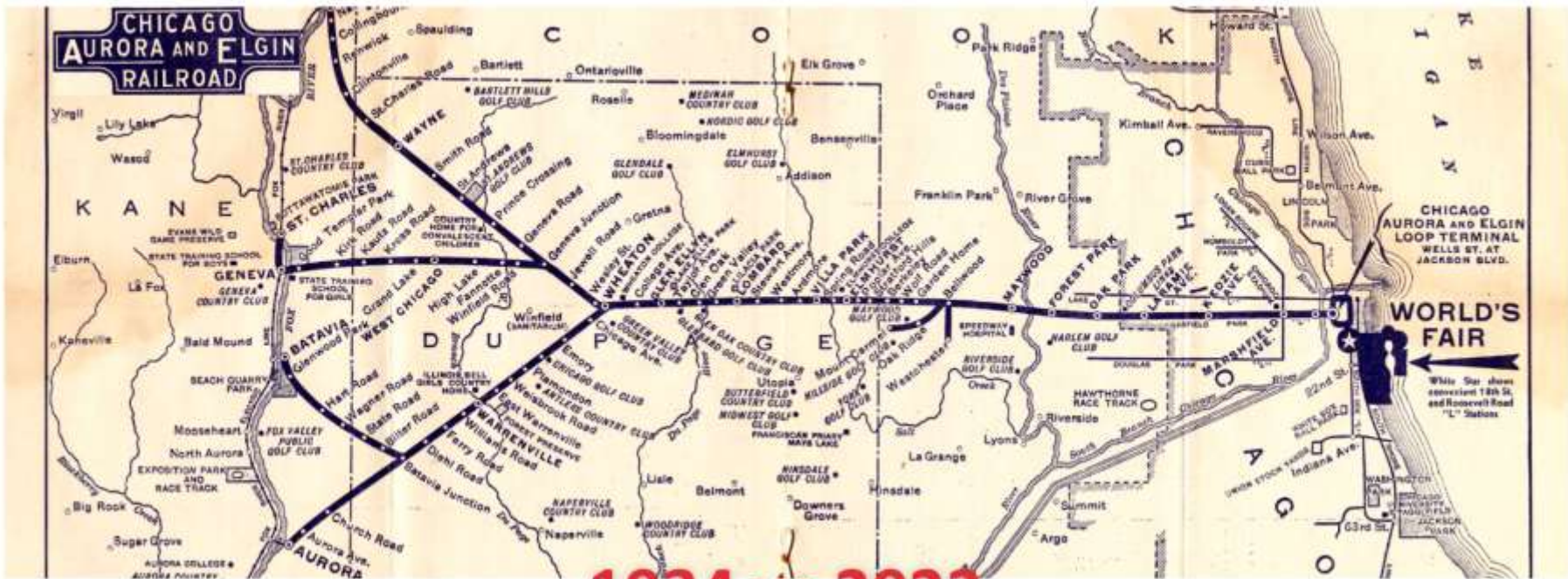
Racetrack, ca. 1967





**Tourist Camp, ca. 1928**





**1934 vs 2023**



A full color detailed map of the

Messenger  
Public Library  
gets its name  
from...



- A. ...Serving as the “messenger” of education for all, no matter what age, during the WPA
- B. ...the mayor, Howard Messenger
- C. ...from JPS great granddaughter, Emeline





JOHN F. SCHNEIDER

of Rain P.m. 8:00 S. West  
eu. Ther. MON. JUNE 2, 1902 Wea.  
Done chores +  
mowed fine grass along  
side Corne  
Mrs Grace became <sup>Mother</sup> to girl  
Baby 4 A.M. <sup>Schneider</sup>  
Charla worked









## Emeline Schneider Messenger

**Born:** 1902, Aurora, Kane Co.

**Lived:** North Aurora

**Married:** Howard Messenger

**Died:** 7 April 2000 (97),  
Aurora, Kane Co.



658-2

AUG 31 1954

AUG. 31, 1954  
658-2



**1955-2003, 14 E State**



**2003-2023,  
113 Oak**



2017



2023



# Happy 20th Birthday, MPL building!



Thank you for your participation! Please have  
some treats and check out the displays.